

## DIODE SPECIFICATION

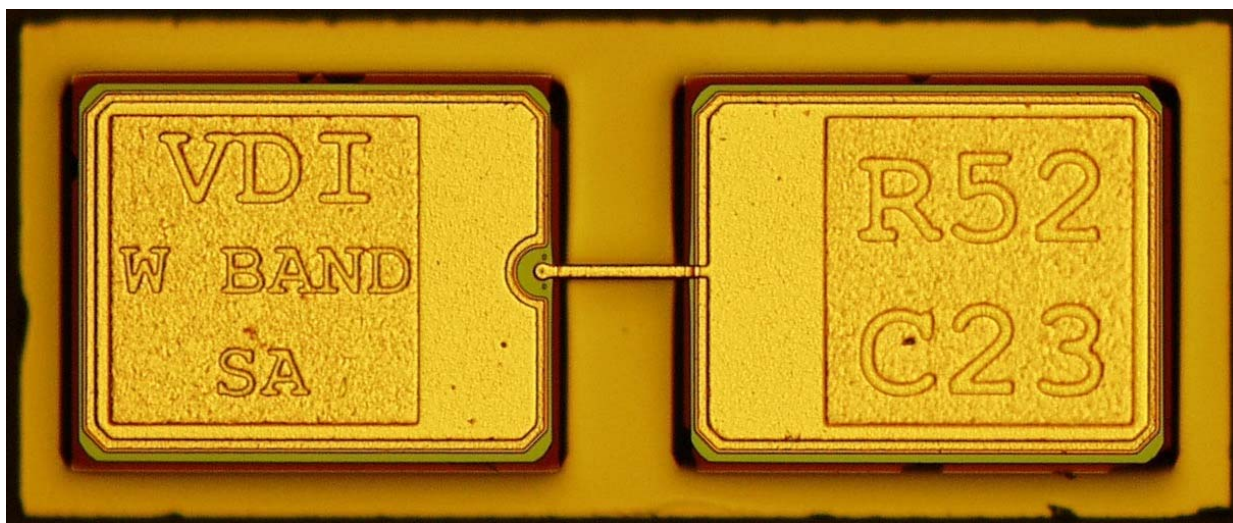
### W Band Single Anode

**Table I ELECTRICAL CHARACTERISTICS**

	Test Conditions	Minimum Value	Maximum Value	Units
R <sub>S</sub> Series Resistance	I <sub>max</sub> =10 mA		4	Ω
V <sub>F</sub> Forward Turn-on Voltage	I <sub>F</sub> = 1 μA	450	500	mV
ΔV	100 μA – 10 μA		70	mV
V <sub>R</sub> Reverse Breakdown	I <sub>R</sub> = 10 μA	9	10	V
C <sub>T</sub> Total Capacitance	V = 0V	31	41	fF
C <sub>PP</sub> Pad to Pad Capacitance	V = 0V		15	fF

**Table II PHYSICAL DIMENSIONS**

	Minimum Value	Maximum Value	Units
Chip Length	580	630	μm
Chip Width	230	280	μm
Substrate Thickness	90	100	μm



Typical Forward IV Curve

