

DIODE SPECIFICATION

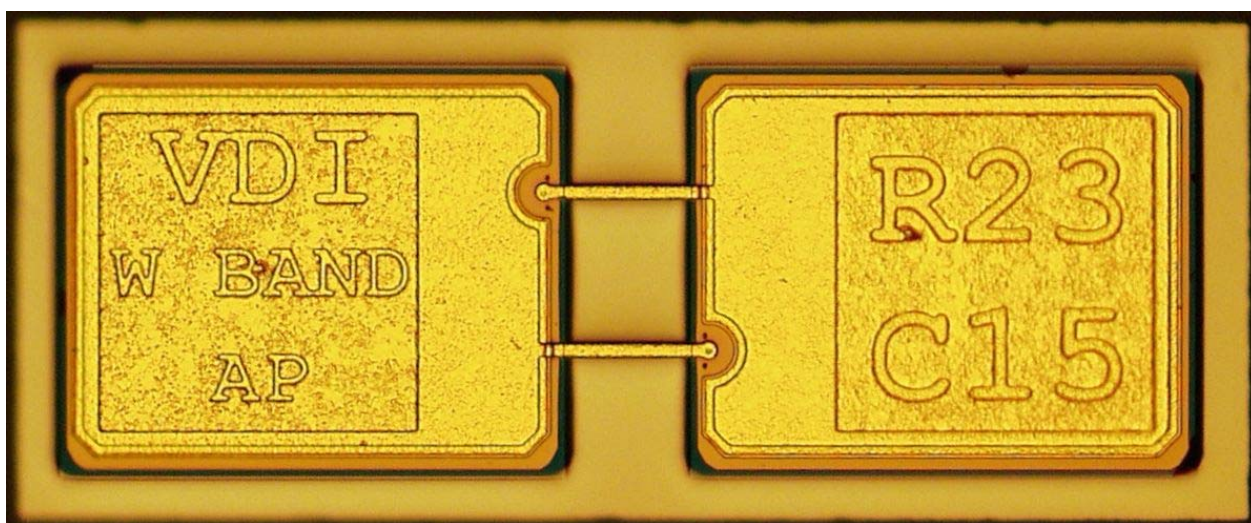
W Band Anti-Parallel

Table I ELECTRICAL CHARACTERISTICS

	Test Conditions	Minimum Value	Maximum Value	Maximum δ side to side	Units
R_s Series Resistance	$I_{max}=10$ mA		4	0.5	Ω
V_F Forward Turn-on Voltage	$I_F = 1$ μ A	470	520	10	mV
ΔV	100 μ A – 10 μ A		70	1	mV
C_T Total Capacitance Both Anodes	$V = 0V$	56	62	N/A	fF
C_{PP} Pad to Pad Capacitance	$V = 0V$		15		fF

Table II PHYSICAL DIMENSIONS

	Minimum Value	Maximum Value	Units
Chip Length	580	630	μ m
Chip Width	230	280	μ m
Substrate Thickness	90	100	μ m



Typical Forward IV Curve

